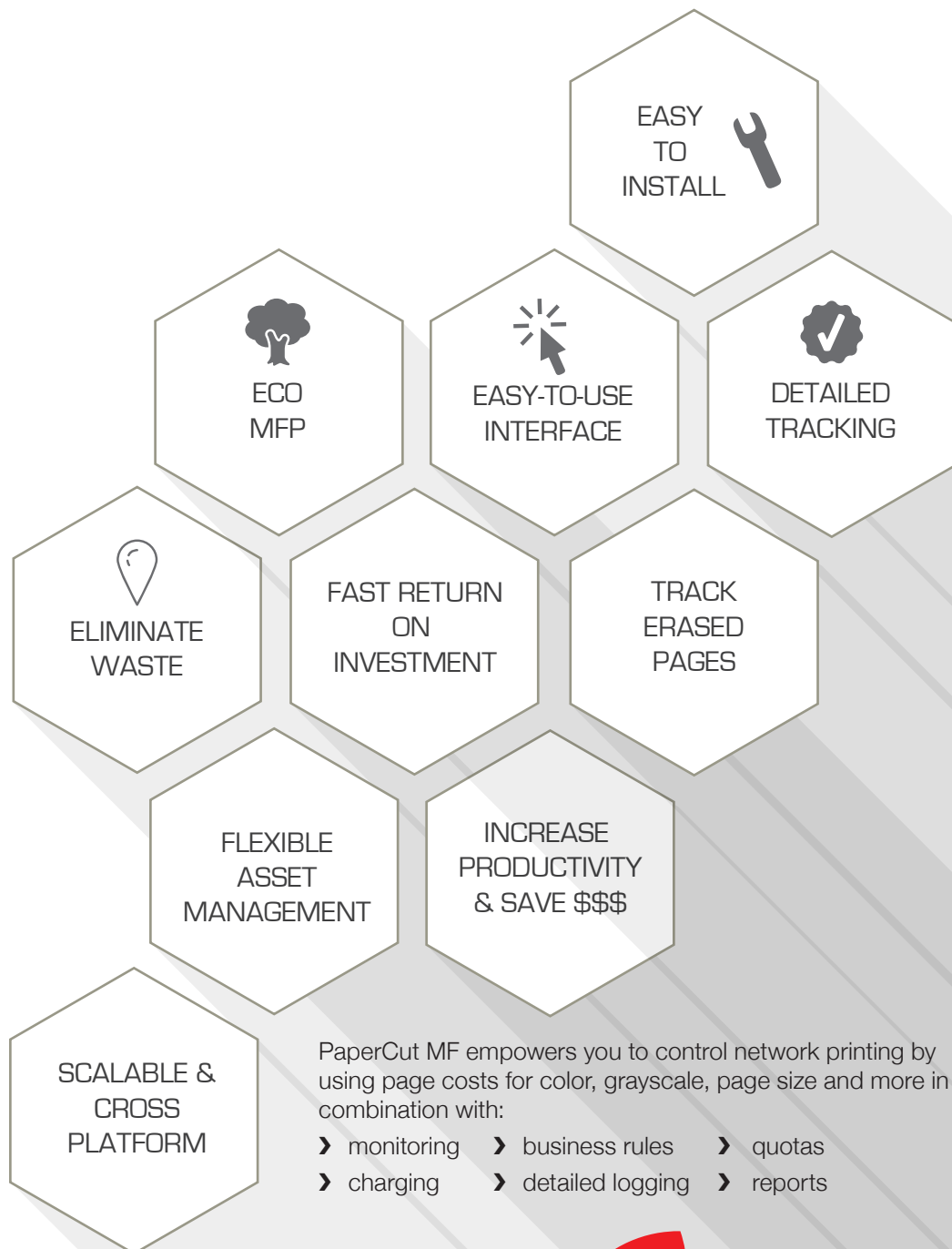


# REDUCE YOUR PRINTING COSTS

and environmental impact

## PaperCut MF™

PaperCut MF provides unique eco-tracking capability that is only available with Toshiba e-Studio 306LP/RD30



PaperCut MF empowers you to control network printing by using page costs for color, grayscale, page size and more in combination with:

- › monitoring
- › business rules
- › quotas
- › charging
- › detailed logging
- › reports

# A COMPREHENSIVE SOLUTION...

## “Find Me” Release Anywhere Printing

The modern creative office worker demands mobility and freedom. For this reason, PaperCut MF deploys a “Virtual Print Queue”, so that regardless of location, users can retrieve their print jobs from any printer on the network, where and when they choose.

To make it even easier, jobs are released with the wave of a proximity card.

Now, that’s real flexibility at work.



Scanning an Proximity ID Card to release print job

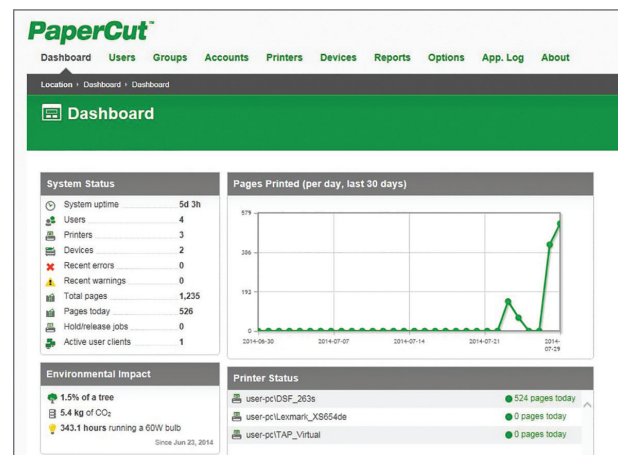
## A solution for “Green” initiatives

The green washing of business is not a viable option. Today’s environmentally conscience world demands real solutions.

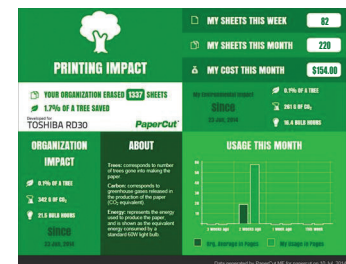
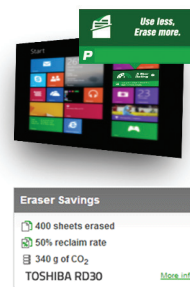
That’s why PaperCut MF has in-built reporting and print controls that deliver real, quantifiable data. These tools will empower your business. Empower it with the ability to control waste, employ green initiatives and deliver the feedback you and your customers demand.

CO2 and Carbon emission reporting is also available in the form of handy widgets and dashboards.

At a glance, you can view your paper output in terms of CO2 produced and trees consumed, so you can make constructive steps to minimize waste and maximize those precious resources. Further Toshiba’s world first MFP technology with erasable toner can reduce your paper usage by 80% and take your green initiatives to a whole new level.



Built-in reporting and print controls



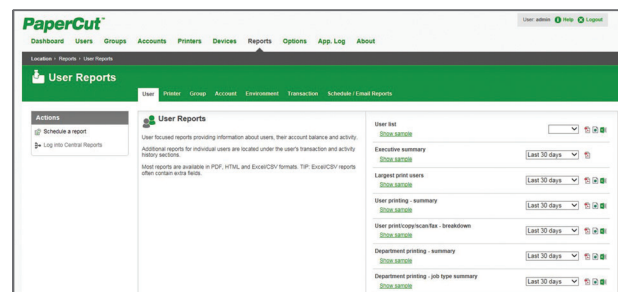
Dashboard to track environmental impact

## Monitoring and Centralized Usage Reports

With over 80 standard reports to choose from, identifying the who, where and how much is printed, has now become a whole lot easier.

PaperCut MF provides the tools to monitor the output of your MFD fleet. This means, real time activity reports can be deployed silently to ease your staff into the new workflow changes.

Web Single Sign on (SSO) empowers both Administrators and End Users alike with convenient access to tools for configuration, tracking and monitoring of activities in real time.



User usage reporting screen

## Mobile and BYOD

Convenience with accountability - user friendly solutions for your Mobile and BYOD users.

- Google Cloud Print™
- iOS Print
- Driverless Web Print
- Driverless Email Print
- QR code release



Scanning a QR Code to release print job from mobile phone

## Printing Policies

Advanced scripting can be used to define and finely tune your printing policies, and support your organization in eliminating waste and changing user behavior.

With PaperCut you can:

- Automatically route large jobs to high volume printers
- Route printing of emails or web pages to the Toshiba erasable toner paper re-use system
- Convert jobs to grayscale and duplex
- Discourage or disable color printing by user group
- Least cost routing (suggest more cost effective devices based on conditions)
- Allow free printing, for example, during class times
- Define action by job attribute, user, group, period of day, device feature and type



Pop-up print policy alerts to route printing to Toshiba eco-MFP

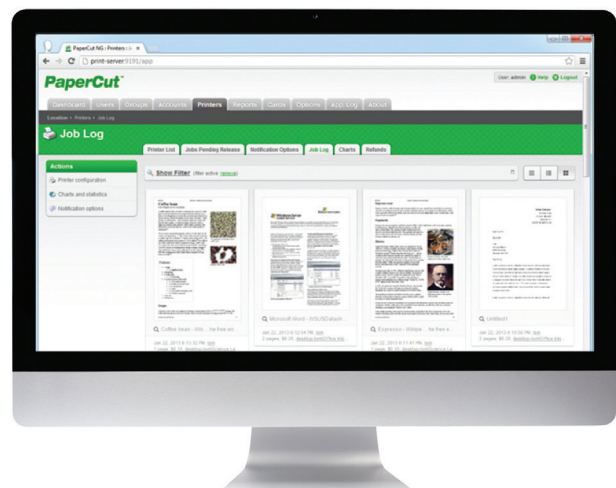
## Print Archiving & Watermarking

Use Print Archiving to locate jobs and empower your organization with auditing tools that visually identify what is being printed along with user level tracking and reporting functionality.

Watermarking enhances security and encourages responsible printing. Documents are identifiable by owner or origin.

Printed by Sally at 08/03/2011 3:46:43 PM

Example of watermarking



Quickly locate and track print jobs with visual archiving

# SPECIFICATIONS

**Scalability:**

Suitable for networks of 5 to 500,000+ users

**Architecture:**

Single server or multi-server environments

**Server Operating Systems:**

Microsoft Windows Server (any edition including 64-bit and server core)  
Mac OS X Server (10.4 or higher)  
Linux (any modern distribution)  
Novell OES Linux and iPrint

**Directory Services:**

Active Directory (native integration including nested groups and OU's)  
OpenDirectory  
eDirectory  
LDAP

**Workstation Operating Systems:**

Microsoft Windows (any edition)  
Mac OS X (10.4 or higher)  
Linux (any modern distribution)  
Unix Workstation (Java required to run client software)

**MFDs/Printers:**

Contact your authorized Toshiba service centre for most current details

**Card Readers:**

RFID Proximity  
Barcode  
Magnetic Stripes

**Database Servers:**

Self managing internal database: suitable for up to 5,000 end users  
Microsoft SQL Server 2000/2005/2008/2012 (either 32 or 64 bit)  
Microsoft SQL Express 2005/2008/2012 (free from Microsoft)  
PostgreSQL 7.1 or higher  
MySQL 5.0 or higher  
Oracle 9.2 or higher

**Cluster Environments:**

Microsoft Failover Server  
Microsoft Cluster Server  
Veritas Cluster Server  
Linux HA

**Encryption:**

SSL encryption used for sensitive client server communication.

**Acknowledgments**

Microsoft and Windows® are registered trademarks of Microsoft Corporation in the United States and/or other countries.  
Mac OS® is a registered trademark of Apple Inc. AirPrint and the AirPrint logo are trademarks of Apple Inc.  
© 2014 Google Inc. All rights reserved. Google Cloud Print™ web printing service is a trademark of Google Inc.  
All other brand and/or product names are trademarks of their respective owners. PaperCut™ is a registered trademark of PaperCut Software International Pty Ltd. This brochure was compiled based on information that was accurate prior to product launch.  
Product design and specifications are subject to change without notice. No part of this material may be used or reproduced in any manner whatsoever without permission.

<b>Corporate Office</b>	9740 Irvine Blvd., Irvine, CA 92618-1631 Tel: 949-462-6000
<b>East Coast</b>	959 Route 46 East, 5th Floor, Parsippany, NJ 07054 Tel: 973-316-2700
<b>Midwest</b>	8770 W. Bryn Mawr Ave., Suite 700, Chicago, IL 60631 Tel: 773-380-6000
<b>South</b>	2037 Bakers Mill Rd., Dacula, GA 30019 Tel: 678-546-9385
<b>West Coast</b>	9740 Irvine Blvd., Irvine, CA 92618 Tel: 949-462-6000
<b>Web Site</b>	<a href="http://www.business.toshiba.com">www.business.toshiba.com</a>

**TOSHIBA**  
Leading Innovation >>>

**TOGETHER**  
**INFORMATION**